

Public Transportation and Rail Map

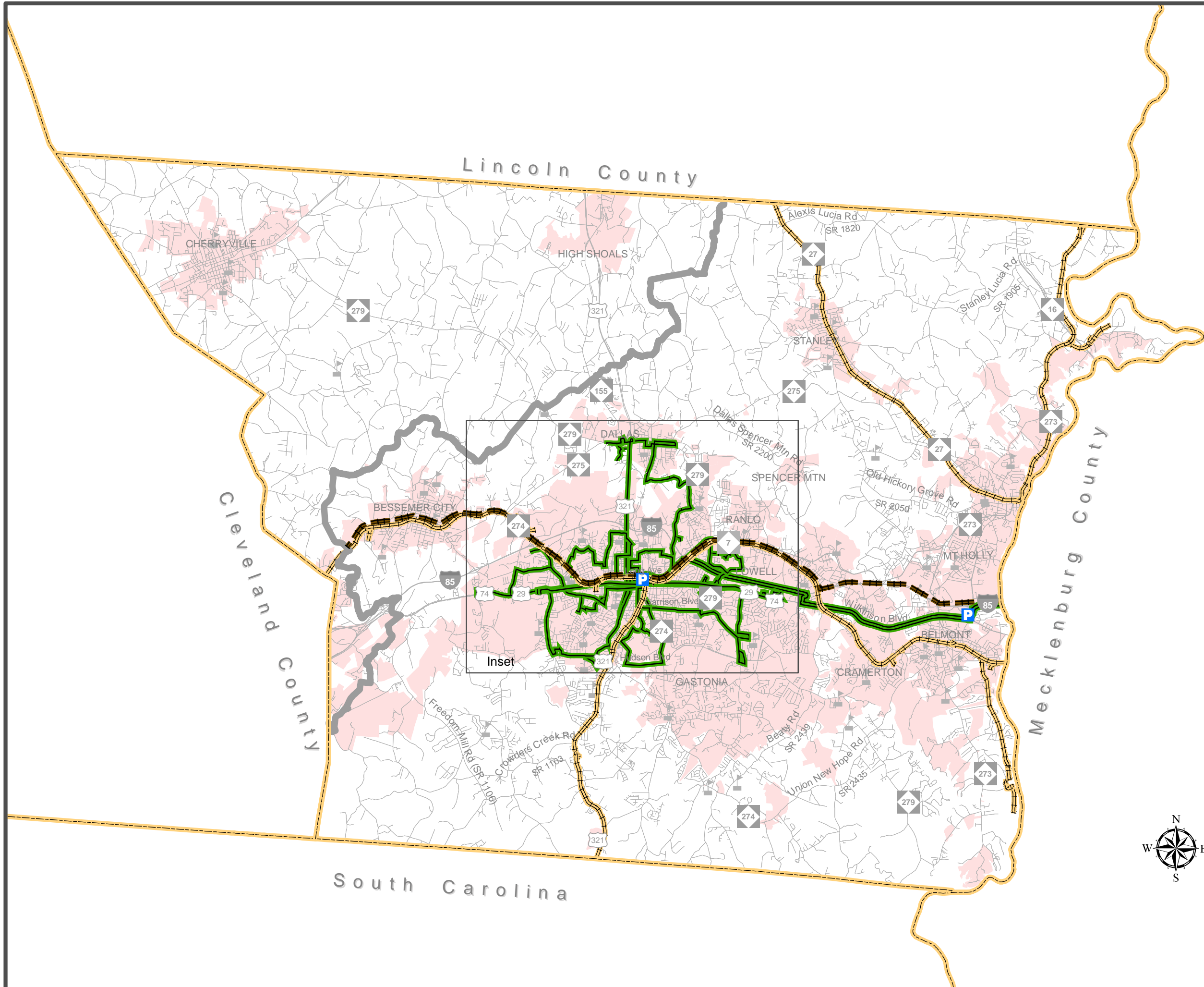
GASTON URBAN AREA



Metropolitan Planning Organization

Gaston Urban Area MPO Comprehensive Transportation Plan

Plan date: January 17, 2013



- Bus Routes**
- Existing
 - Needs Improvement
 - Recommended

- Fixed Guideway**
- Existing
 - Needs Improvement
 - Recommended

- Operational Strategies**
- Existing
 - Needs Improvement
 - Recommended

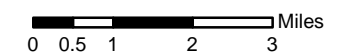
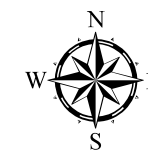
- Rail Corridor**
- Active
 - Inactive
 - Recommended

- High Speed Rail Corridor**
- Existing
 - Recommended

- Rail Stops**
- Existing
 - Recommended

- Intermodal Connector**
- Existing
 - Recommended

- Park and Ride Lot**
- Existing
 - Recommended



Sheet 3 of 3

Base map date: January 4, 2010

Refer to CTP document for more details